

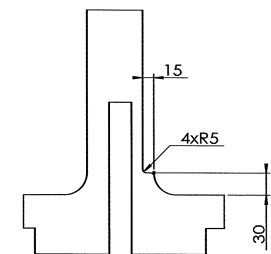
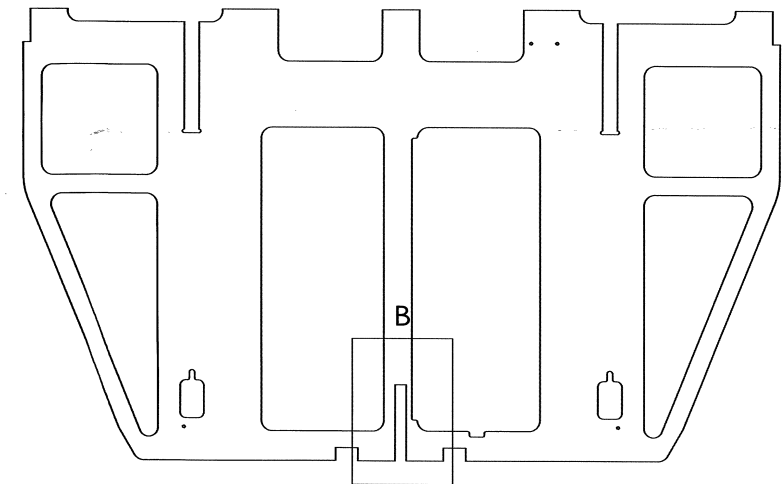
6	7	8
REV.	EAP#	DESCRIPTION
A	37132	First Release
B	41882	b: increase the cutting areas for both sides
		DATE
		2015-5-11
		2015-11-25
		YU

D: RYHLÉNI RĚSNÝCH OBLASTÍ NA OBOU STRANÁCH

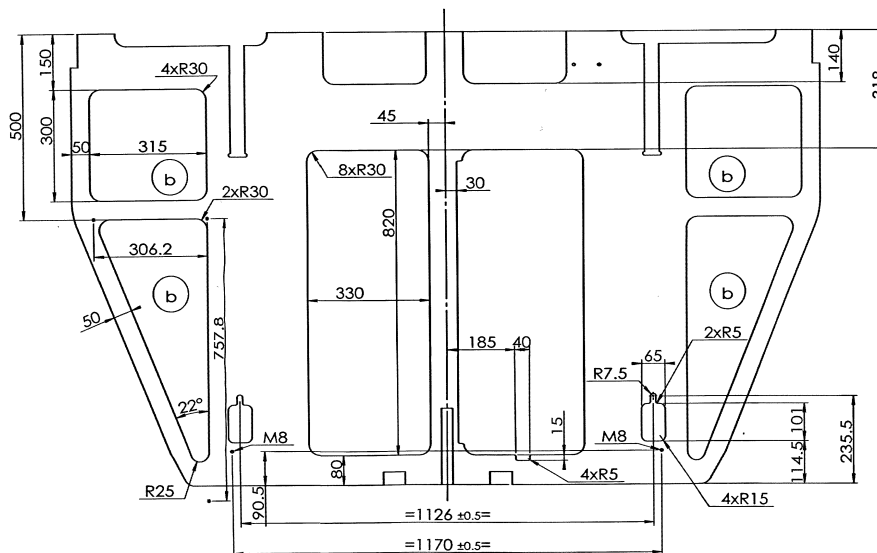
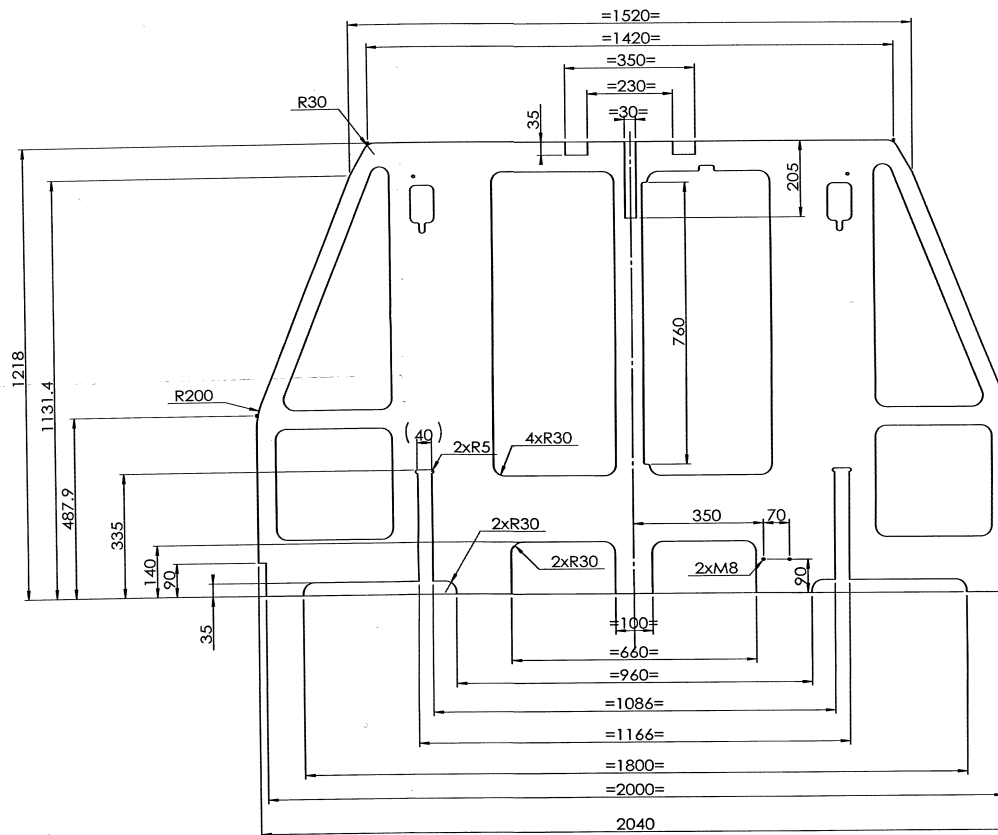
# PŘEKLAD

dně: 10-06-2016

PROVEDL/A  
JANA PROKEŠOVÁ



DÉTAIL B  
ECHELLE 1 : 5



Standard Tolerances
Tolerances refer to WH-WUX-E-017-A unless below
TOLERANCES
DECIMALS
FRACTIONS
ANGLE
HOLE DIA.
CORNERS
FILLET
REMOVE BURRS AND BREAK SHARP EDGES
DIM IN MILLIMETERS

MATERIAL
S235JR(E24)
FINISH
ACT. WT.
CALC. WT.
192kg
FIRST USED ON
TMX-150

EUROPEAN VIEWS
DRAWN BY YU
CHECKED BY
APPROVED BY
ELECTRONIC SIGNATURE

TLD
No.16 Yu'an Road, A-Park, New District, Wuxi, Jiangsu 214142, China
TEL:+86 510 6696 9688 FAX:+86 510 6696 9602
TITLE
PLATEFORME, CABINE
SIZE
A2
CAGE CODE
SLC05
DWG. NO.
1112392-010
REV.
B
SCALE
1:10
RELEASED DATE
2015-11-25
SHEET
1/1